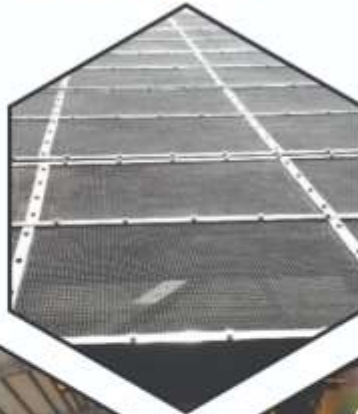




شركة السياج الذهبي لتشكيل ومعالجة المعادن

GOLDEN FENCE MECHANICAL CO





Introduction

Golden Fence is a manufacturer of high quality steel fencing with core competency in customized fencing solutions. **Golden Fence** constantly strives to research, develop and introduce products and solutions to meet new challenges in the area of security. We have taken the 'Lean and Sleek' philosophy from manufacturing to product development without compromising on the system strength.

Golden Fence is an ISO 9001:2015 certified company manufactures and supplies perimeter fencing made out of steel. That defines our core competency.

Golden Fence has developed itself into a one-stop shop for all fencing requirements. We manufacture starting from the fabric of the fence – whether it is chain link or welded mesh, to the posts required to support the fabric, to last nut and bolt required installing a fence system. We offer solutions for a wide variety of applications, whether it is political borders, oil and gas pipelines, prisons, corporate buildings, residential complexes, gardens, swimming pools, industrial zones, motorways, stadiums, school etc.

We are pleased to present some details about some of our products which include but not limited to the followings:

Fence ARAMCO Types I, II, III, IV, & V, SSD I, II, III & IV and HCIS I, II, III & IV. GATES; bolted and welded construction, folded type big gate for wellheads, sliding gates manually operated and electrically operated with atomization, complete Fence Accessories. Our machines have capacity of 120 rolls a day of Black, Hot Dip Galvanized and PVC Coated Chain Link Fence and Barbed Wires respectively.

Golden Fence manufactures as per customer specifications and our products comply with 'International Standards' such as 'ASTM (American Society for Testing and Materials)' and 'BS (British Standards)'.



Vision, Mission & Commitment's

Our Vision

Our vision is to become one of the leading companies in the manufacturing of Chain Link Fence and Allied Accessories throughout the region, providing the most reliable, safe and value added products to our customers.

Our Mission

We will achieve our vision by:

- Pursuing innovation as the path to delivering superior Fencing solution to our customers; and there by attaining customer delight.
- Ensuring the satisfaction of our shareholders, partners and employees by supporting them to achieve their goals.
- Continually striving to enhance our performance by employing high quality control and implementation systems; and adopting advance safety and optimization practices.
- Maintaining the highest level of integrality in all our dealings; and contributing responsibility to the environment, the community and the nation.

Our Commitment

It's about actions not just words, words are easy; it's living up to them that can be hard. It's often when the challenge is greatest that our promise has real Meaning, showing the true value from enduring relationships.



Our Fence Materials



GALVANIZED WIRE MESH



PVC COATED WIRE MESH



BARBED WIRE GALV



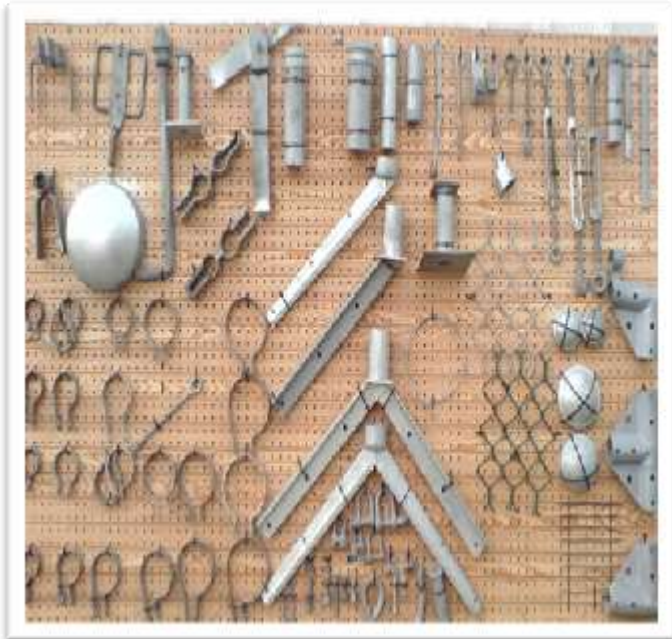
BARBED WIRE PVC



CONCERTINA RAZOR WIRE



All Fence Accessories



All Types of Pipes



GALVANIZED PIPES



PVC COATED PIPES



All Types of Fence Gates



Double Leaf Gate



Single Leaf Gate



Sliding Gate

All Types of Fence





Our Major Equipment's



Chain Link Fence Machines



PVC Coating Machines



Lathe Machines



Shearing Machines



Rolling Machines



Drill Machines Pvc



Barbed Wire Machines



Press Machines



C-R- 2055009682

VAT- 311269024400003

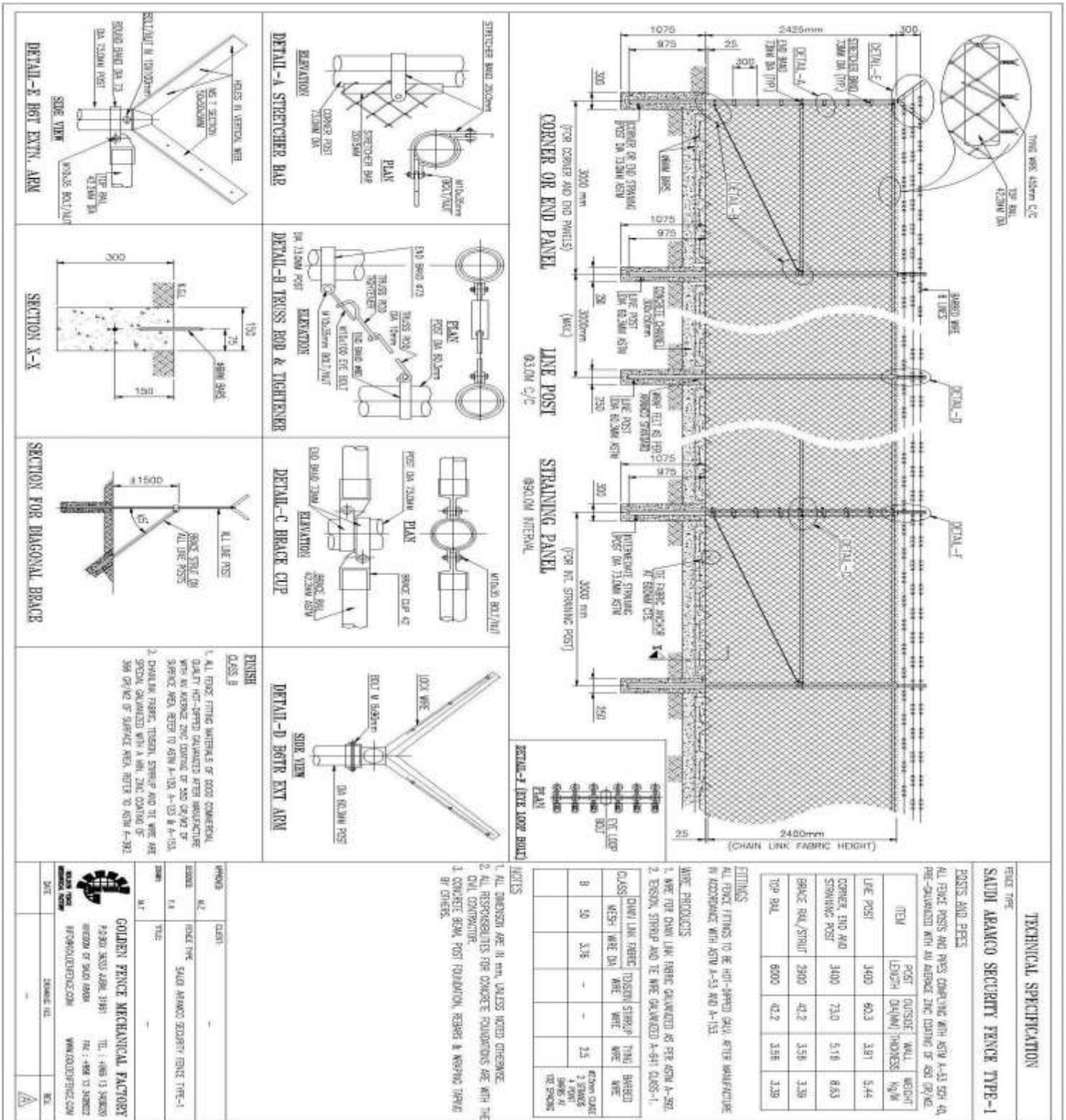
Support Industrial Area, Road 114 Jubail KSA.
info@goldenfence.com

سجل رقم - ٢٠٥٥٠٠٩٦٨٢

رقم التسجيل الضريبي - ٣١١٢٦٩٠٢٤٤٠٠٠٠٣

Tel: +966 13 340 8020 Fax: +966 13 340 8022
www.goldenfence.com

Design & Drawing – Saudi Aramco Type – I Fence





C:R- 2055009682
 VAT- 311269024400003
 Support Industrial Area, Road 114 Jubail KSA.
 info@goldenfence.com

سجل رقم ٢٠٥٥٠٠٩٦٨٢٠٠٣
 رقم التسجيل الضريبي ٣١١٢٦٩٠٢٤٤٠٠٠٠٣
 Tel: +966 13 340 8020 Fax: +966 13 340 8022
 www.goldenfence.com

Design & Drawing – Saudi Aramco Type II Fence

DETAIL-A STRETCHER BAR

DETAIL-B TRUSS ROD & TIGHTENER

DETAIL-C WINDING BRACKET

DETAIL-D BRACE CUP

DETAIL-E HOT EXT. ARM

DETAIL-F HOT EXTN. ARM

SECTION FOR DIAGONAL BRACE

FINISH

CLASS B

- ALL EDGE FITTING WITHIN 50 OF CONCRETE QUANTY NOT LAPPED CHARCOTER AFTER MANUFACTURE WITH AN ALLOWANCE 20% CORNER OF 450 OR ANY OF SURFACE AREA REFER TO ASTM A-102.4-102.8 & A-101.2
- CHARCOTER FABRIC, TENSION, STRETCH AND THE WIRE ARE SPECIAL CHARCOTER WITH 4 MIN. 20% CORNER OF 450 OR ANY OF SURFACE AREA, REFER TO ASTM A-102.

TECHNICAL SPECIFICATION

SAUDI ARAMCO SECURITY FENCE TYPE-2

POSTS AND PILES

ITEM	POST LENGTH (MM)	OUTSIDE WALL THICKNESS (MM)	WEIGHT (KG/M)
LINE POST	3400	60.3	3.91
CORNER, END AND SPANNING POST	3400	73.0	5.16
BRACE, PILE/STRAUT	2900	42.2	3.56
TOP PILE	4000	42.2	3.56

FITNESS

ALL EDGE FITTING TO BE HOT-DIPPED ZINC AFTER MANUFACTURE IN ACCORDANCE WITH ASTM A-53 AND A-153.

WIRE PRODUCTS

CLASS	MESH	WIRE DIA. (MM)	WIRE WEIGHT (KG/M)	TENSILE STRENGTH (MPA)	WIRE TYPE	WIRE COATING
B	50	3.15	4.3	310	3.5	45% Zn COATING

NOTES

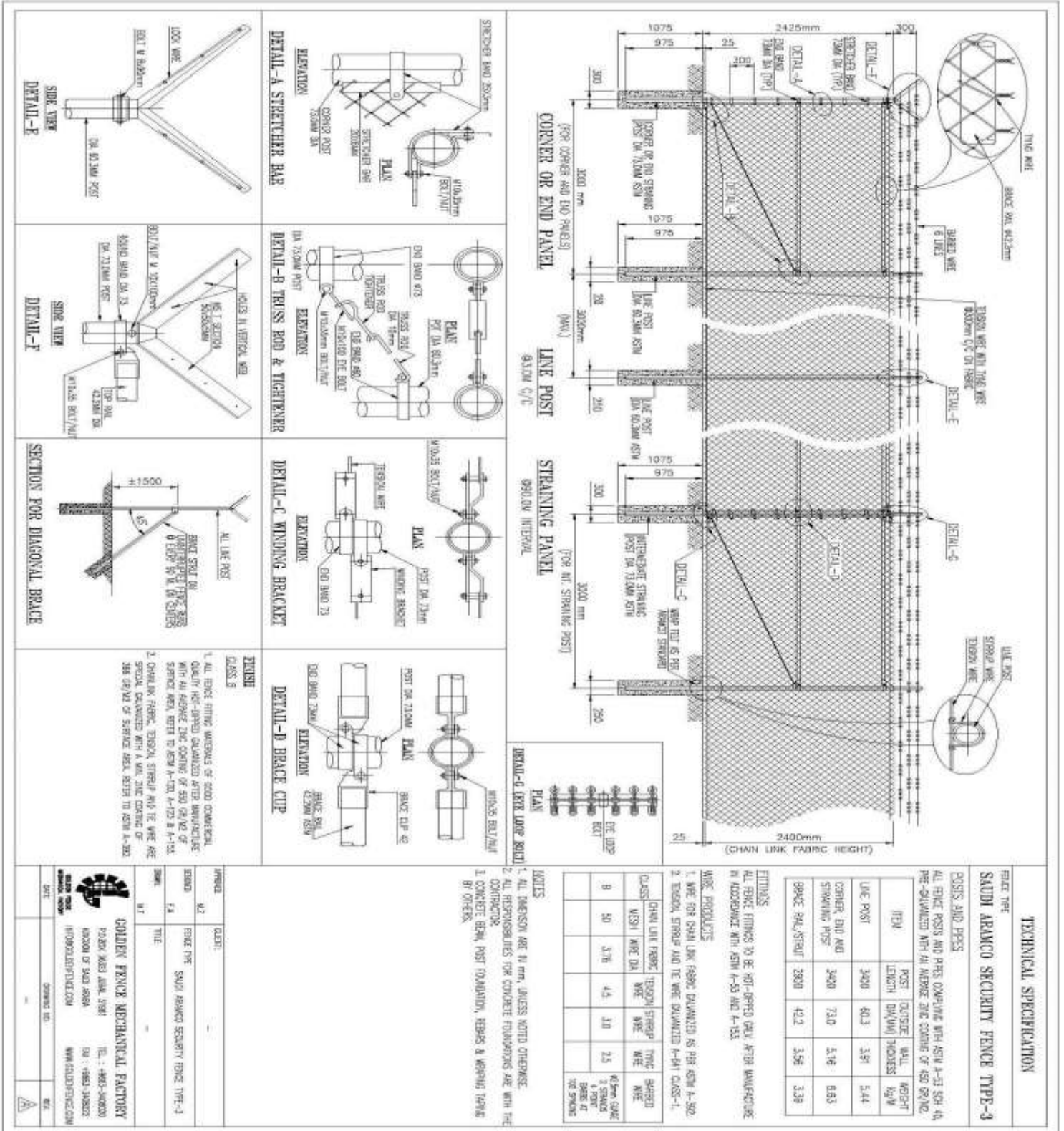
- ALL DIMENSION ARE IN MM, UNLESS NOTED OTHERWISE.
- ALL RESPONSIBILITIES FOR CONCRETE FOUNDATIONS ARE WITH THE CONTRACTOR.
- CONCRETE BRACK, POST FOUNDATION, REPAIRS & WINDING SPAND BY OTHERS.



C-R- 2055009682
 VAT- 311269024400003
 Support Industrial Area, Road 114 Jubail KSA.
 info@goldenfence.com

سجل رقم - ٢٠٥٥٠٠٩٦٨٢٠
 رقم التسجيل الضريبي - ٣١١٢٦٩٠٢٤٤٠٠٠٠٣
 Tel: +966 13 340 8020 Fax: +966 13 340 8022
 www.goldenfence.com

Design & Drawing – Saudi Aramco Type III Fence



TECHNICAL SPECIFICATION

SAUDI ARAMCO SECURITY FENCE TYPE-3

POSTS AND PERS

ALL FENCE POSTS AND PERS COMPLIANT WITH ASTM A-53 SCH-40 PRE-GALVANIZED WITH AN ANTI-ZINC COATING OF 450 G/M².

ITEM	POST	OUTSIDE LENGTH (DIM/IN)	WALL THICKNESS (MM)	WEIGHT (KG/M)
LINE POST	3400	60.3	3.91	5.44
CORNER, END AND STRAINING PERS	3400	73.0	5.16	8.53
BRACE PERS/STRAUT	2800	42.2	3.56	3.38

FINISHES

ALL FENCE FINISHES TO BE HOT-DIPPED GALV. AFTER MANUFACTURE IN ACCORDANCE WITH ASTM A-53 AND A-753.

WIRE PRODUCTS

CLASS	CHAIN LINK FABRIC	TENSION STRAINING WIRE	TONG WIRE	SHARDED WIRE
W351	WIRE DIA	WIRE	WIRE	WIRE
9	50	3.76	4.5	1.0
				2.5

NOTES

- ALL DIMENSIONS ARE IN MM. UNLESS NOTED OTHERWISE.
- ALL RESPONSIBILITIES FOR CONCRETE FOUNDATIONS ARE WITH THE CONTRACTOR.
- CONCRETE BRACK, POST FOUNDATION, PERS & WINDING STRAINING BR OTHERS.

FINISHES

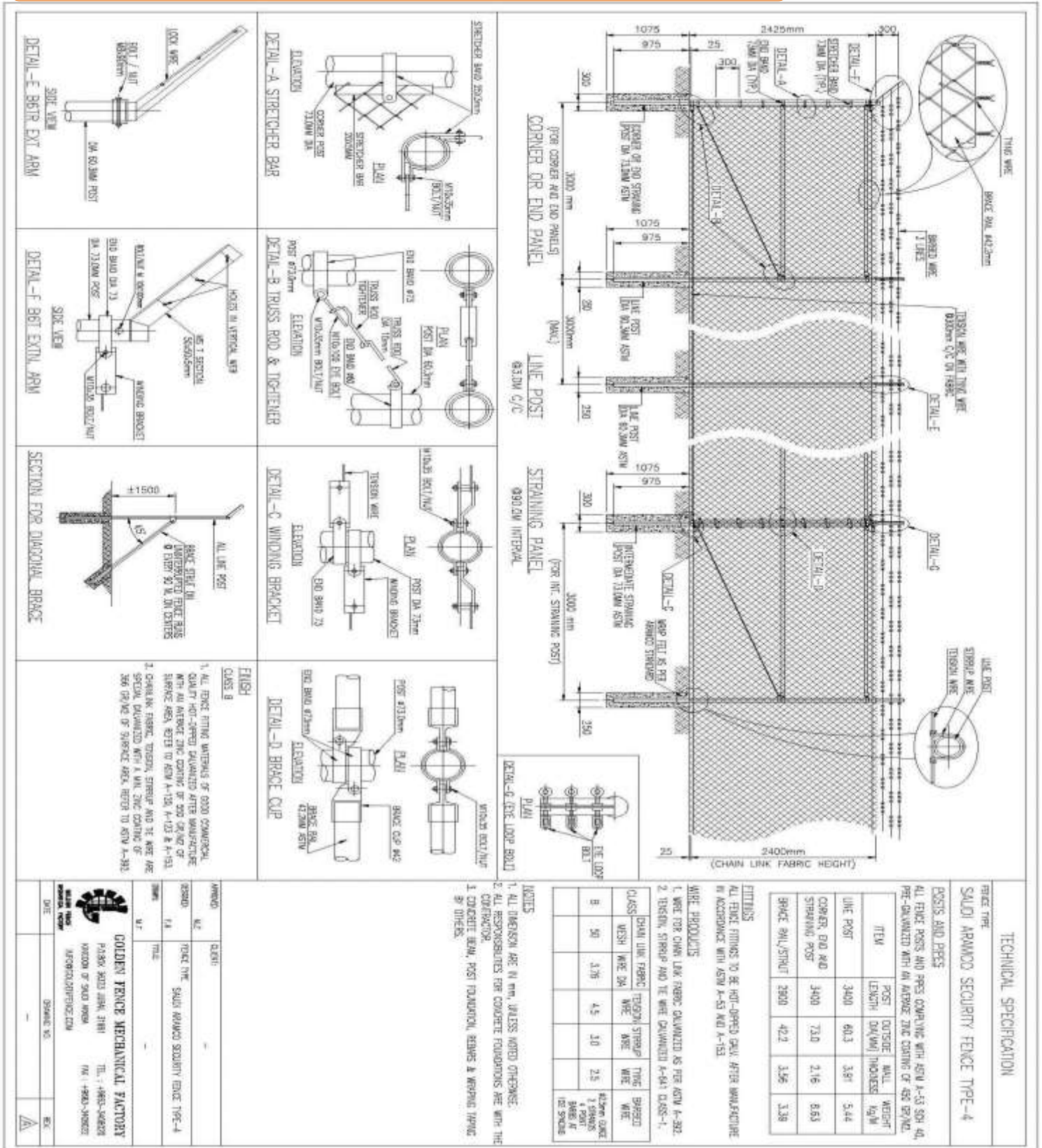
- ALL FENCE FINISHES TO BE HOT-DIPPED GALV. AFTER MANUFACTURE IN ACCORDANCE WITH ASTM A-53 AND A-753.
- CONCRETE BRACK, POST FOUNDATION, PERS & WINDING STRAINING BR OTHERS.

REVISION	DATE	DESCRIPTION
W2		
W1		

GOLDEN FENCE MECHANICAL FACTORY
 P.O. BOX 30201 JUBAIL, SAUDI ARABIA
 TEL: +966-13-3408020
 FAX: +966-13-3408022
 WWW.GOLDENFENCE.COM



Design & Drawing – Saudi Aramco Type 4 Fence





C-R- 2055009682

VAT- 311269024400003

Support Industrial Area, Road 114 Jubail KSA.
info@goldenfence.com

سجل رقم - ٢٠٥٥٠٠٩٦٨٢

رقم التسجيل الضريبي- ٣٠٠٠٠٠٣٤٤٤٠٠٠٠٠٣١١٢٦٩٠٢٤٤

Tel: +966 13 340 8020 Fax: +966 13 340 8022

www.goldenfence.com

Design & Drawing – Saudi Aramco Type 5 Fence

DETAIL-A STRETCHER BAR

DETAIL-B TENSION ROD & TIGHTENER

DETAIL-C WINDING BRACKET

DETAIL-D BRACE CUP

DETAIL-E LINE POST CAP

DETAIL-F CORNER, END RESTRAINING POST CAP

SECTION FOR BRACE POST

CORNER OR END PANEL

LINE POST

STRAINING PANEL

TECHNICAL SPECIFICATION			
FENCE TYPE			
SAUDI ARAMCO SECURITY FENCE TYPE-5			
POSTS AND PERS			
ALL FENCE POSTS AND PERS COMPARED WITH ASTM A-53 SIZE 40-50% GALVANIZED WITH AN MINIMUM TENSILE STRENGTH OF 450 MPa/65,000 PSI.			
ITEM	POST LENGTH (DIM) (mm)	WALL THICKNESS (mm)	WEIGHT (kg/m)
LINE POST	3400	60.3	3.91
CORNER END AND STRAINING POST	3400	75.0	5.16
BRACE (R/W 57mm)	2000	42.3	3.58
			3.29

WIRE PRODUCTS

ALL FENCE FITTINGS TO BE HOT-DIPPED GALVANIZED AFTER MANUFACTURE.

- WIRE FOR CHAIN LINK FABRIC GALVANIZED AS PER ASTM A-302.
- TENSION STRIP AND TIE WIRE GALVANIZED A-581 CLASS-1.

CLASS	CHAIN LINK FABRIC WIRE DIA.	TENSION STRIP WIRE DIA.	TIE WIRE DIA.	SHARDED WIRE DIA.
B	50	3.75	4.5	3.0
				2.5

NOTES

- ALL DIMENSIONS ARE IN mm UNLESS NOTED OTHERWISE.
- ALL FOUNDATIONS FOR CONCRETE FOUNDATIONS ARE WITH THE DIMENSIONS.
- CONCRETE BEAM POST FOUNDATION, BEAMS & WAPPING TRAILING BY OTHERS.
- ALL WIND BOLT/NUT ARE CARBIDE BOLT/NUT.

FINISH

CLASS B

- ALL FENCE FITTING MATERIALS IF GOOD COMMERCIAL QUANTITY DELIVERED AFTER MANUFACTURE.
- CHEMICAL FABRIC TENSION STRIP AND TIE WIRE ARE GALVANIZED.

GOLDEN FENCE MECHANICAL FACTORY

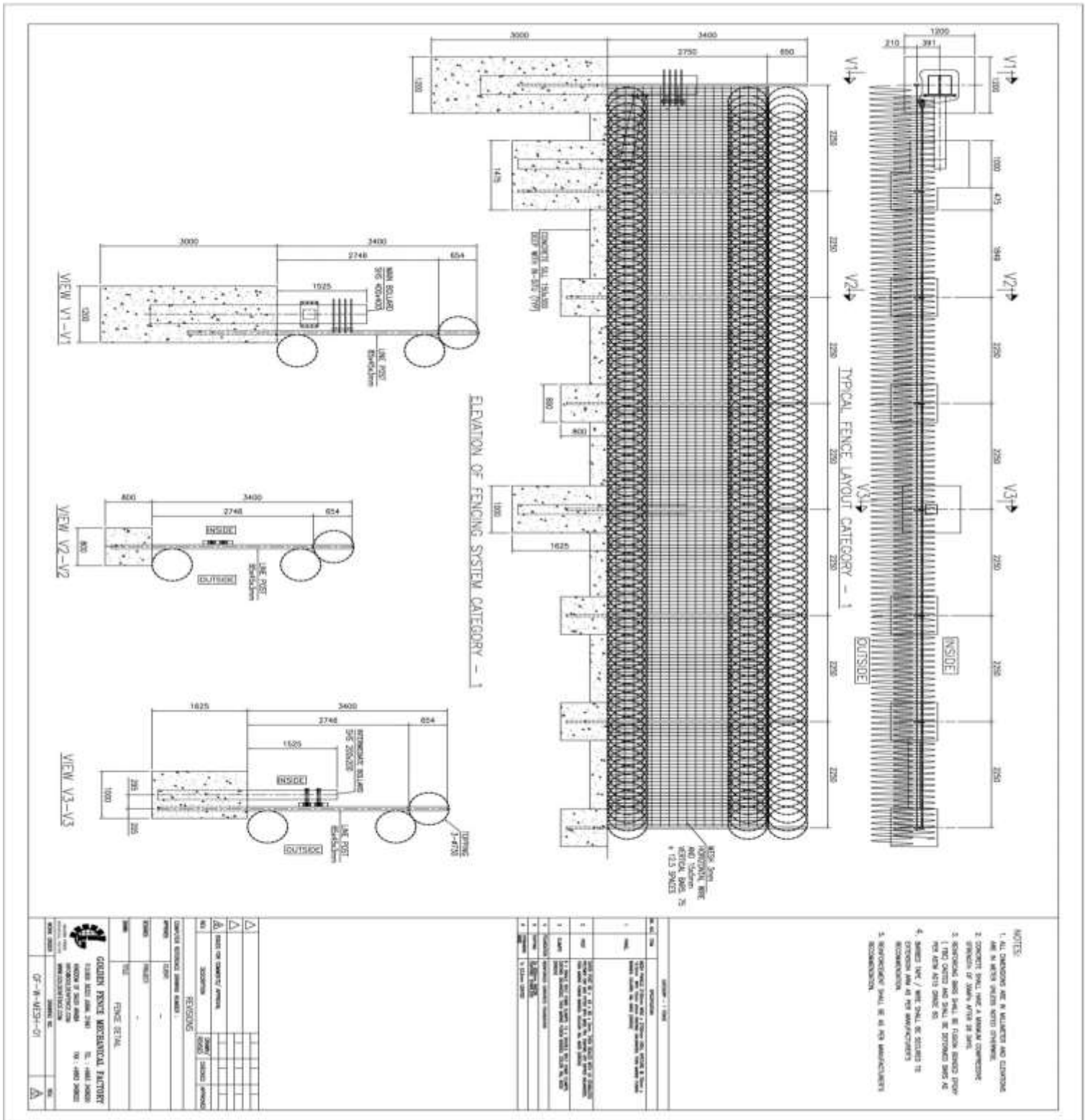
PO BOX 8230 JUBAIL KSA
 TEL: 01330003
 FAX: 01330003
 WWW.GOLDENFENCE.COM



C-R- 2055009682
 VAT- 311269024400003
 Support Industrial Area, Road 114 Jubail KSA.
 info@goldenfence.com

سجل رقم - ٢٠٥٥٠٠٩٦٨٢
 رقم التسجيل الضريبي - ٣١١٢٦٩٠٢٤٤٠٠٠٣
 Tel: +966 13 340 8020 Fax: +966 13 340 8022
 www.goldenfence.com

Design & Drawing – RIGID WELDED MESH HCIS CAT I - 2017

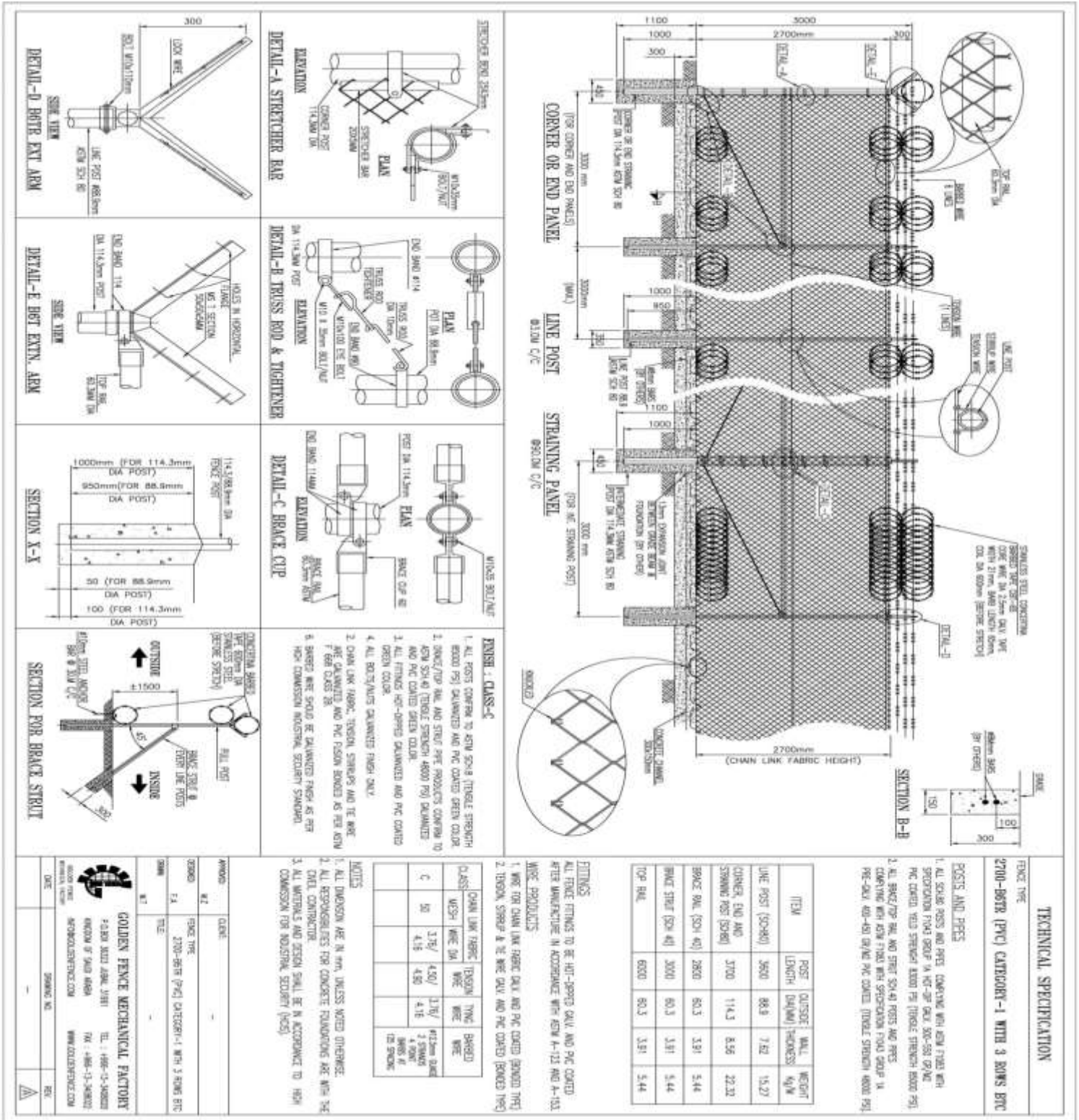




C-R- 2055009682
 VAT- 311269024400003
 Support Industrial Area, Road 114 Jubail KSA.
 info@goldenfence.com

سجل رقم ٢٠٥٥٠٠٩٦٨٢-
 رقم التسجيل الضريبي ٣١١٢٦٩٠٢٤٤٠٠٠٠٣
 Tel: +966 13 340 8020 Fax: +966 13 340 8022
 www.goldenfence.com

Design & Drawing – HCIS CAT I Fence





C-R: 2055009682
 VAT: 311269024400003
 Support Industrial Area, Road 114 Jubail KSA.
 info@goldenfence.com

سجل رقم ٢٠٥٥٠٠٩٦٨٢-
 رقم التسجيل الضريبي ٣١١٢٦٩٠٢٤٤٠٠٠٠٣
 Tel: +966 13 340 8020 Fax: +966 13 340 8022
 www.goldenfence.com

Design & Drawing – HCIS CAT II Fence

TECHNICAL SPECIFICATION

FENCE TYPE
 2700-BESTR (PVC) CATEGORY-2 WITH 3 BARS BTC

POSTS AND PIPES

- ALL SOLID POSTS AND PIPES CONFORM WITH ASTM F1063 WITH STAINLESS STEEL COATING FOR 14, 40, 48, 50, 50-50, 50/50, PVC COATED YELLOW STRIPPER 6000 P90 (THICK STRIPPER 6000 P90).
- ALL SPICE / PVC RAIL AND SPICE / SOLID POSTS AND PIPES CONFORM WITH ASTM F1063 WITH STAINLESS STEEL COATING FOR 14, 40, 48, 50, 50-50, 50/50 PVC COATED (THICK STRIPPER 6000 P90).

ITEM	POST LENGTH (DIA/HA)	WALL THICKNESS (MM)	WEIGHT (KG/M)
LINE POST (50x50)	3000	88.9	7.62 / 15.27
CORNER, END AND STRAINING POST (50x80)	3700	114.3	8.56 / 22.32
BRACE RAIL (50x 40)	2000	60.3	3.91 / 5.44
BRACE STRUT (50x 40)	3000	60.3	3.91 / 5.44
TOP RAIL	6000	60.3	3.91 / 5.44

FINISHES
 ALL FINISHES TO BE HOT-DIPPED GALV AND PVC COATED AFTER MANUFACTURE IN ACCORDANCE WITH ASTM A-123 AND A-153.

WIRE PRODUCTS

CLASS	CHAIN LINK FABRIC	TENSION	TANG	SHARDED
WESH	WIRE DIA	WIRE	WIRE	WIRE
C	3.18 / 4.18 / 4.76	4.76 / 4.76	4.76	4.76
	4.18	4.76	4.76	4.76

NOTES

- ALL DIMENSIONS ARE IN mm, UNLESS NOTED OTHERWISE.
- ALL RESPONSIBILITIES FOR CONCRETE FOUNDATIONS ARE WITH THE CLIENT CONTRACTOR.
- ALL MATERIALS AND DESIGN SHALL BE IN ACCORDANCE TO HIGH COMMISSION FOR INDUSTRIAL SECURITY (HIS).

FINISH - CLASS-C

- ALL POSTS CONFORM TO ASTM A304 (TENSILE STRENGTH 60000 PSI) GALVANIZED AND PVC COATED GREEN COLOR.
- STRIPPER FOR RAIL AND STRIP PVC PRODUCTS CONFORM TO ASTM A304 (TENSILE STRENGTH 60000 PSI) GALVANIZED AND PVC COATED GREEN COLOR.
- ALL FINISHES HOT-DIPPED GALVANIZED AND PVC COATED GREEN COLOR.
- ALL BRACE/RAILS GALVANIZED TRIPPER ONLY.
- CHAIN LINK FABRIC, TENSION, STRIPPER AND TIE WIRE ARE GALVANIZED AND PVC TUBSON BOUNDED AS PER ASTM A304 CLASS 28.
- SPICE WIRE SHOULD BE GALVANIZED TRIPPER AS PER HIGH COMMISSION INDUSTRIAL SECURITY STRONGER.

DETAILS:

- DETAIL-A: STRETCHER BAR
- DETAIL-B: TRESS ROD & TIGHTENER
- DETAIL-C: BRACE CUP
- DETAIL-D: BESTR EXT ARM
- DETAIL-E: BESTR EXTN. ARM
- SECTION X-X
- SECTION FOR BRACE STRUT

SECTION B-B

SECTION X-X

SECTION FOR BRACE STRUT

DETAIL-A: STRETCHER BAR

DETAIL-B: TRESS ROD & TIGHTENER

DETAIL-C: BRACE CUP

DETAIL-D: BESTR EXT ARM

DETAIL-E: BESTR EXTN. ARM

SECTION X-X

SECTION FOR BRACE STRUT

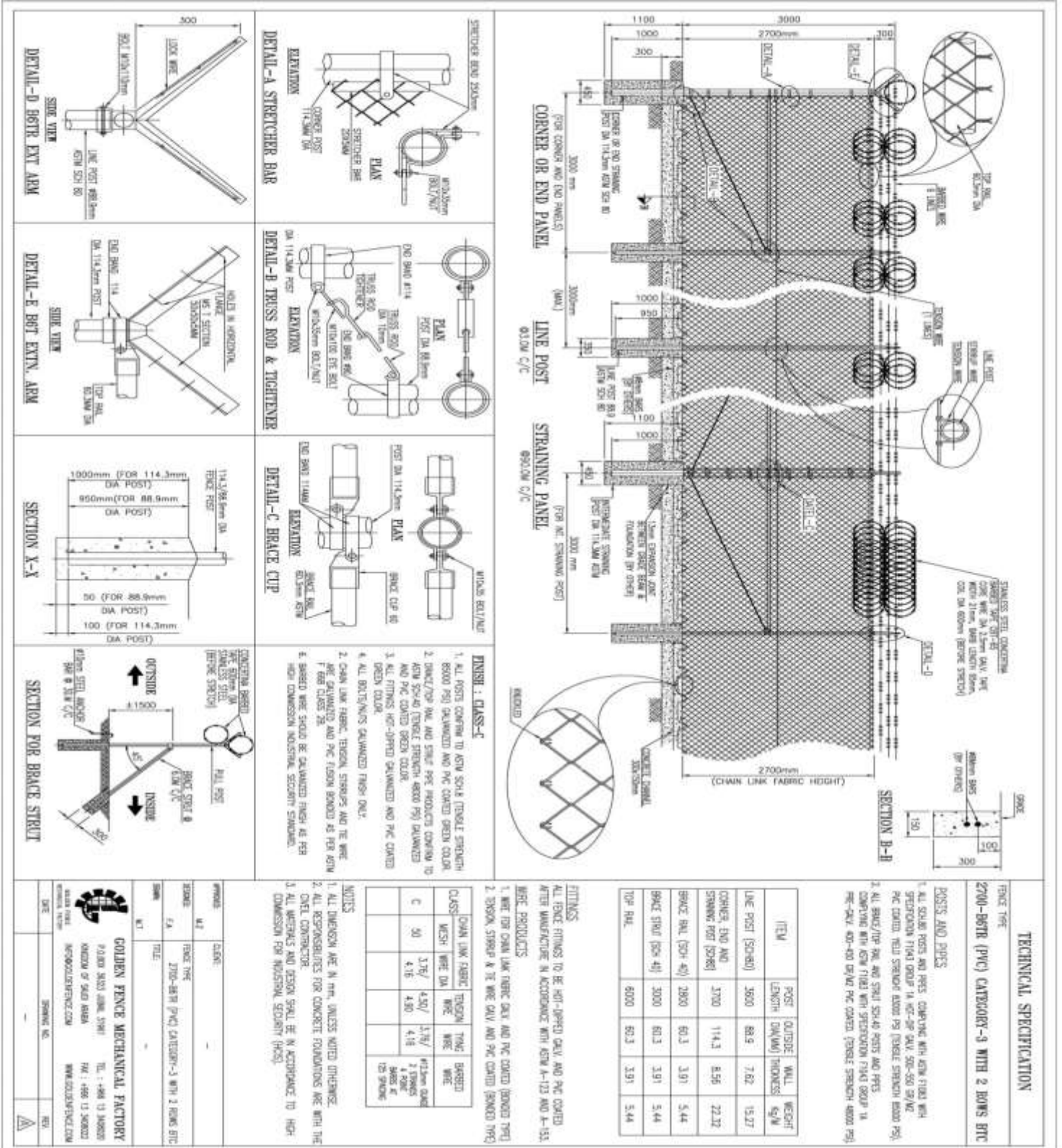
SECTION B-B

SECTION X-X

SECTION FOR BRACE STRUT



Design & Drawing – HCIS CAT III Fence





C:R- 2055009682
 VAT- 311269024400003
 Support Industrial Area, Road 114 Jubail KSA.
 info@goldenfence.com

سجل رقم ٢٠٥٥٠٠٩٦٨٢-
 رقم التسجيل الضريبي ٣١١٢٦٩٠٢٤٤٠٠٠٠٣-
 Tel: +966 13 340 8020 Fax: +966 13 340 8022
 www.goldenfence.com

Design & Drawing – HCIS CAT IV Fence

DETAIL-A STRETCHER BAR

DETAIL-B TRUSS ROD & TIGHTENER

DETAIL-C BRACE CLIP

SECTION X-X

SECTION FOR BRACE STREET

CORNER OR END PANEL

LINE POST

STRAINING PANEL

SECTION B-B

FINISH : CLASS-C

1. ALL POSTS CONFORM TO ASTM A304 (TYPICAL STRENGTH 60000 PSI) GALVANIZED AND PVC COATED GREEN COLOR.
2. STRETCHER BAR, AND STRIP PVC PRODUCTS CONFORM TO ASTM A304 (TYPICAL STRENGTH 60000 PSI) GALVANIZED AND PVC COATED GREEN COLOR.
3. ALL FITTINGS (HOT-DIPPED GALVANIZED AND PVC COATED GREEN COLOR).
4. ALL BOLTS/NUTS GALVANIZED FINISH ONLY.
5. DOWN LINE FABRIC, TENSION STRIPS AND TIE WIRE PVC GALVANIZED AND PVC FINISH BROWN AS PER ASTM A304 (TYPICAL STRENGTH 60000 PSI) GALVANIZED AND PVC COATED GREEN COLOR.
6. SHARPENED WIRE SHOULD BE GALVANIZED FINISH AS PER HIGH CORROSION INDUSTRIAL SECURITY STANDARD.

NOTES

1. ALL DIMENSIONS ARE IN MM, UNLESS NOTED OTHERWISE.
2. ALL RESPONSIBILITIES FOR CONCRETE FOUNDATIONS ARE WITH THE CLIENT CONTRACTOR.
3. ALL MATERIALS AND DESIGN SHALL BE IN ACCORDANCE TO HIGH CORROSION FOR INDUSTRIAL SECURITY (HCS).

ITEMS

ALL FITTINGS TO BE HOT-DIPPED GALV AND PVC COATED AFTER MANUFACTURE IN ACCORDANCE WITH ASTM A-773 AND A-753.

WIRE PRODUCTS

1. WIRE FOR DOWN LINE FABRIC, ONLY AND PVC COATED (BROWN TYP)
2. TENSION STRIP & TIE WIRE GALV AND PVC COATED (BROWN TYP)

ITEM	POST	OUTSIDE WALL	WEIGHT
	LENGTH	(DIA/MM)	(KGS)
LINE POST (SCHED)	3600	88.9	15.27
CORNER, END AND STRAINING POST (S20X8)	3100	114.3	22.32
BRACE BAR (SCH 40)	2800	60.3	3.91
BRACE STRIP (SCH 40)	3000	60.3	3.44
TOP RAIL	6000	60.3	1.91
			5.44

TECHNICAL SPECIFICATION

FENCE TYPE

2700-HOTR (PVC) CATEGORY-4 WITH 1 ROWS BTC

POSTS AND FITTINGS

1. ALL SCALE POSTS AND FITTINGS CONFORM WITH ASTM F1063 WITH SPECIFICATION F1063 GROUP 1A. HOT-DIP GALV 50-550 GRADE PVC COATED YIELD STRENGTH 60000 PSI (TYPICAL STRENGTH 60000 PSI).
2. ALL BRACE/TIE BAR AND STRIP SCALE POSTS AND FITTINGS CONFORM WITH ASTM F1063 WITH SPECIFICATION F1063 GROUP 1A. HOT-DIP GALV 50-550 GRADE PVC COATED (TYPICAL STRENGTH 60000 PSI).

APPROVED	CLIENT
DESIGNED BY	
CHECKED BY	
DATE	

GOLDEN FENCE MECHANICAL FACTORY

FABRIK SAUD JUBAIL 31801 TEL : +966 13 340820

MANUFACTURING AND SALES OFFICE TEL : +966 13 340820

WWW.GOLDENFENCE.COM



Design & Drawing - Auxiliary Gates

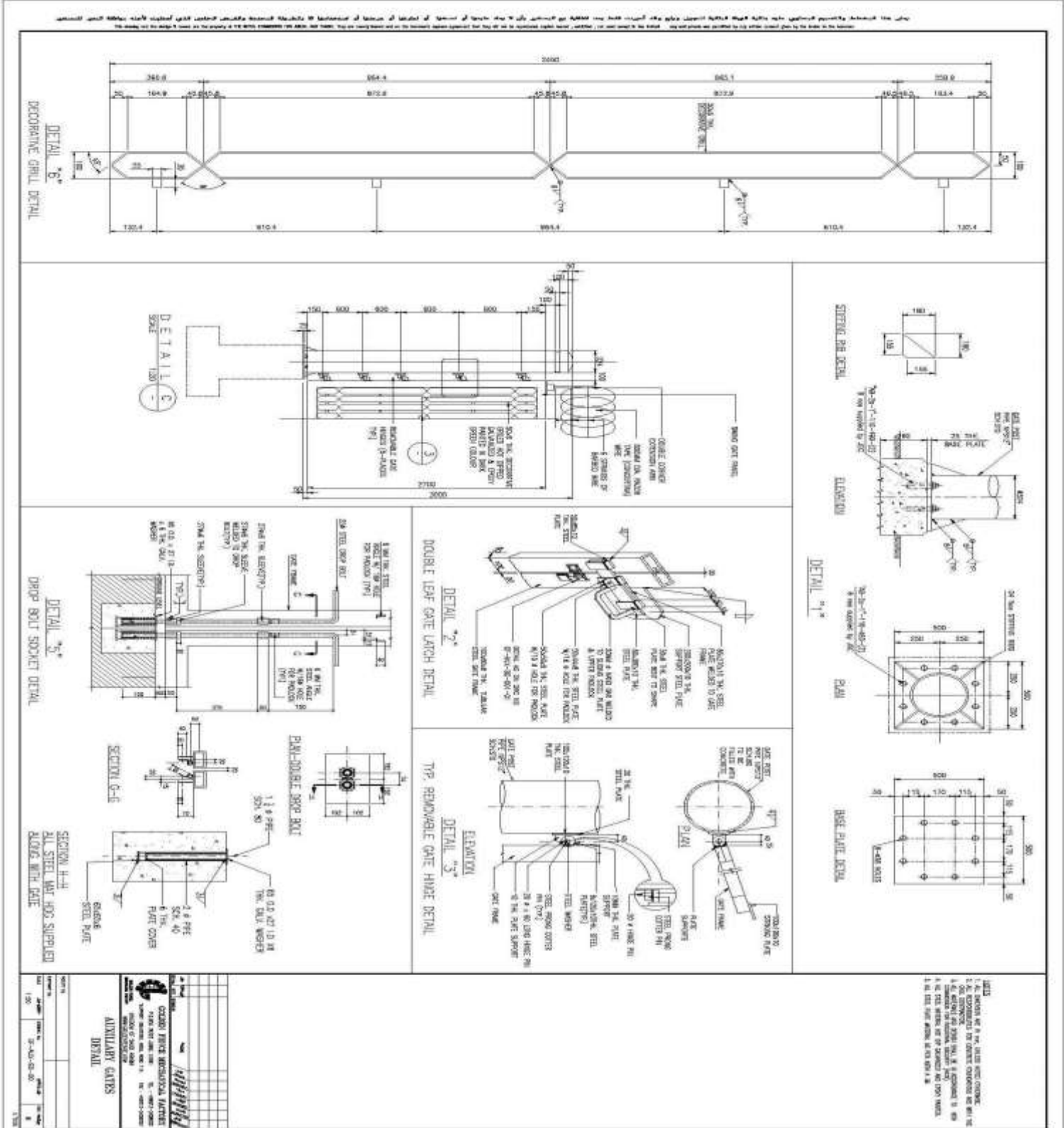


Table with technical specifications for the auxiliary gate, including material grades, dimensions, and manufacturing notes.

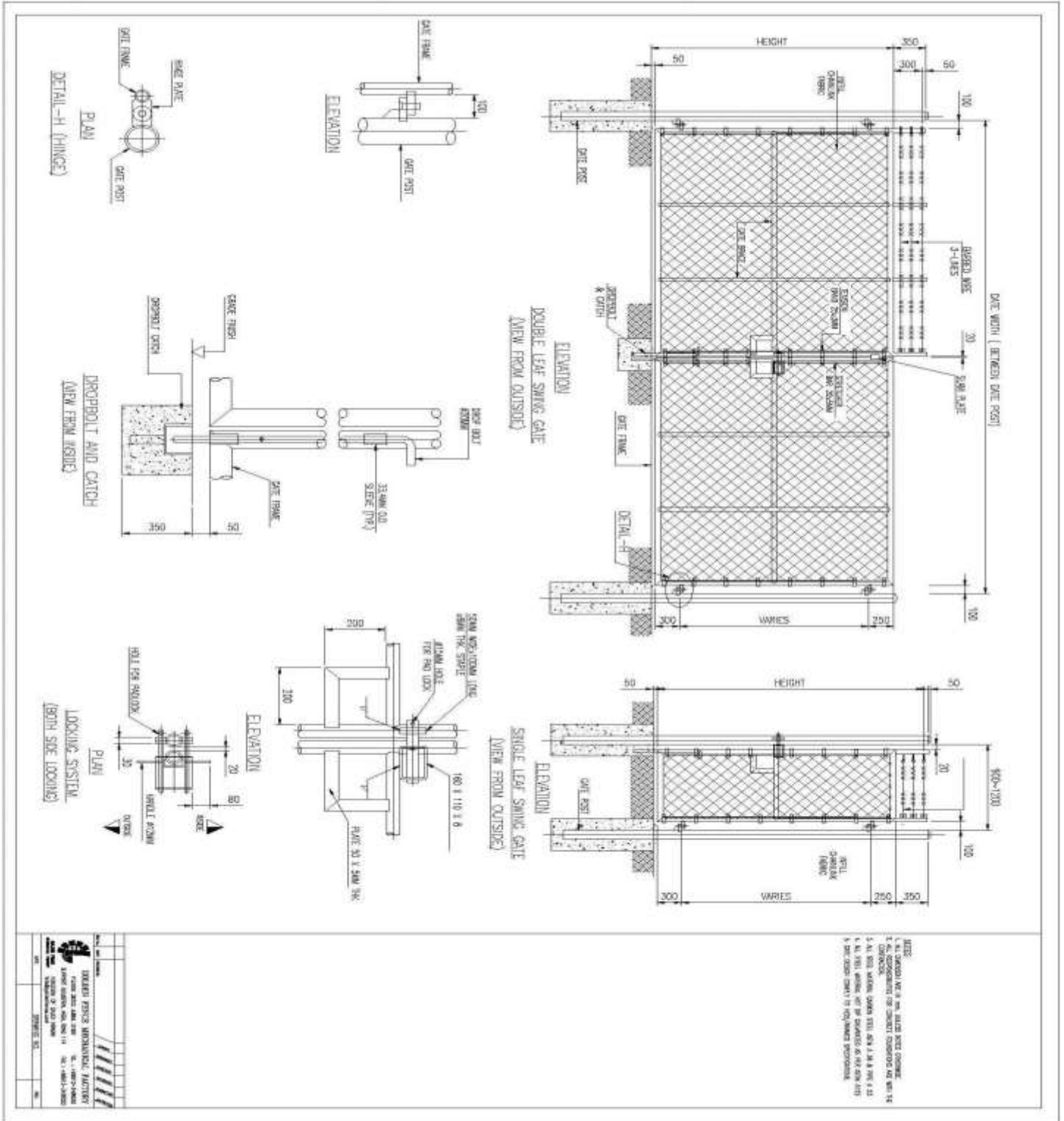
- LISTS
1. ALL DIMENSIONS ARE IN MM. UNLESS SPECIFIED OTHERWISE.
2. ALL DIMENSIONS ARE TO CENTER UNLESS SPECIFIED OTHERWISE.
3. ALL DIMENSIONS ARE TO CENTER UNLESS SPECIFIED OTHERWISE.
4. ALL DIMENSIONS ARE TO CENTER UNLESS SPECIFIED OTHERWISE.
5. ALL DIMENSIONS ARE TO CENTER UNLESS SPECIFIED OTHERWISE.



C-R- 2055009682
VAT- 311269024400003
Support Industrial Area, Road 114 Jubail KSA.
info@goldenfence.com

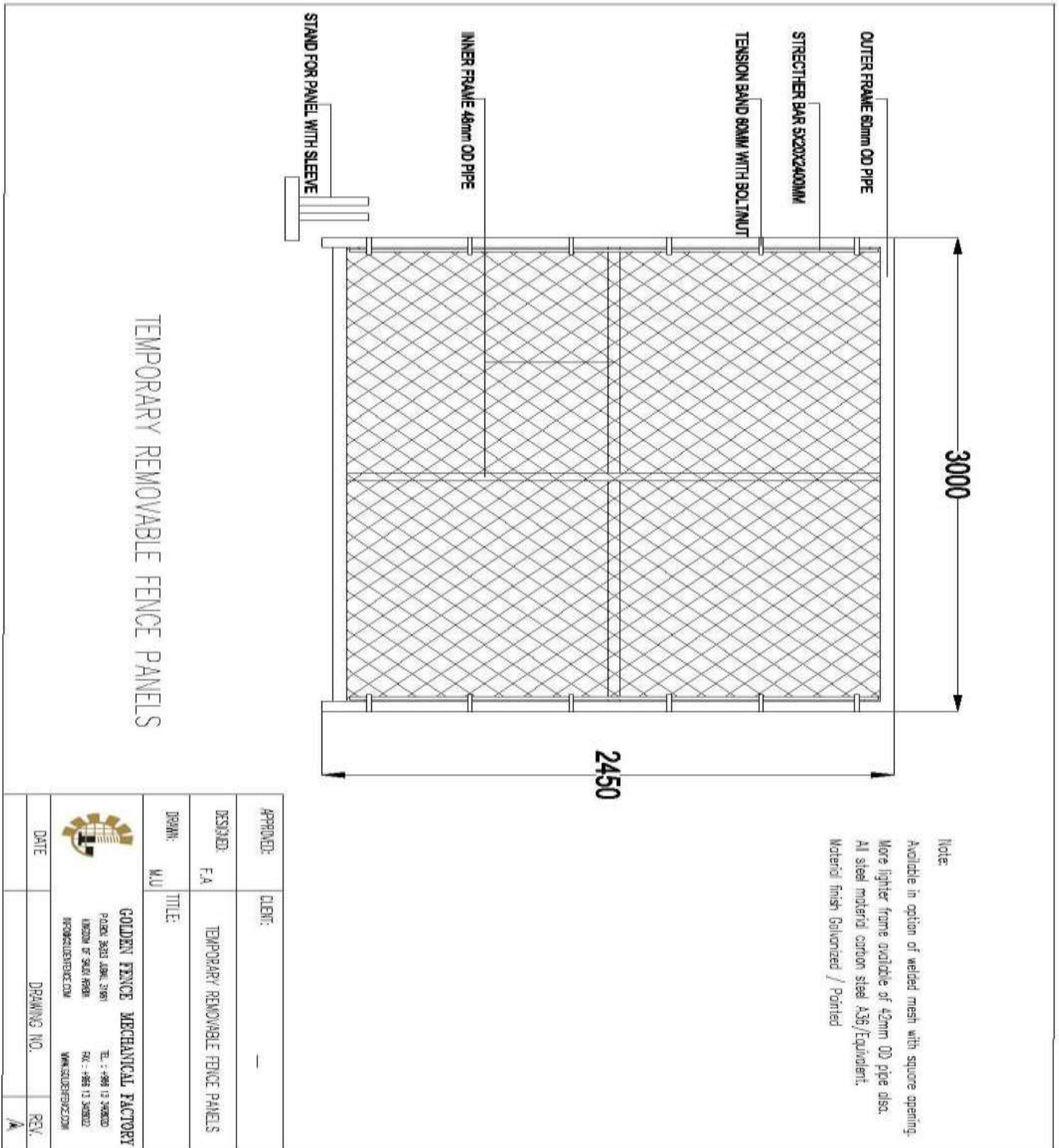
سجل رقم - ٢٠٥٥٠٠٩٦٨٢
رقم التسجيل الضريبي - ٣١١٢٦٩٠٢٤٤٠٠٠٠٣
Tel: +966 13 340 8020 Fax: +966 13 340 8022
www.goldenfence.com

Design & Drawing – Welded Fence Gates



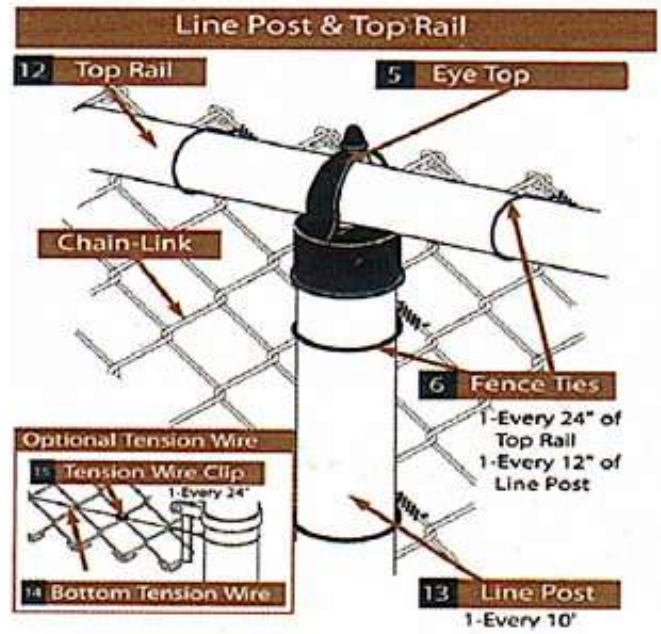
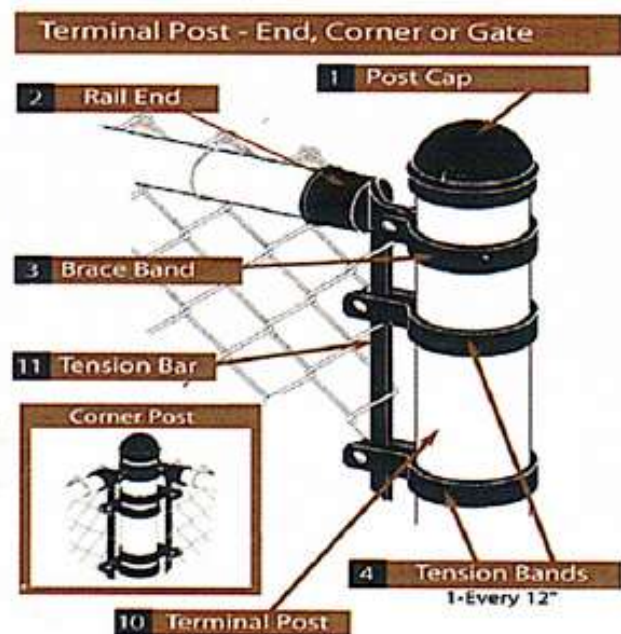
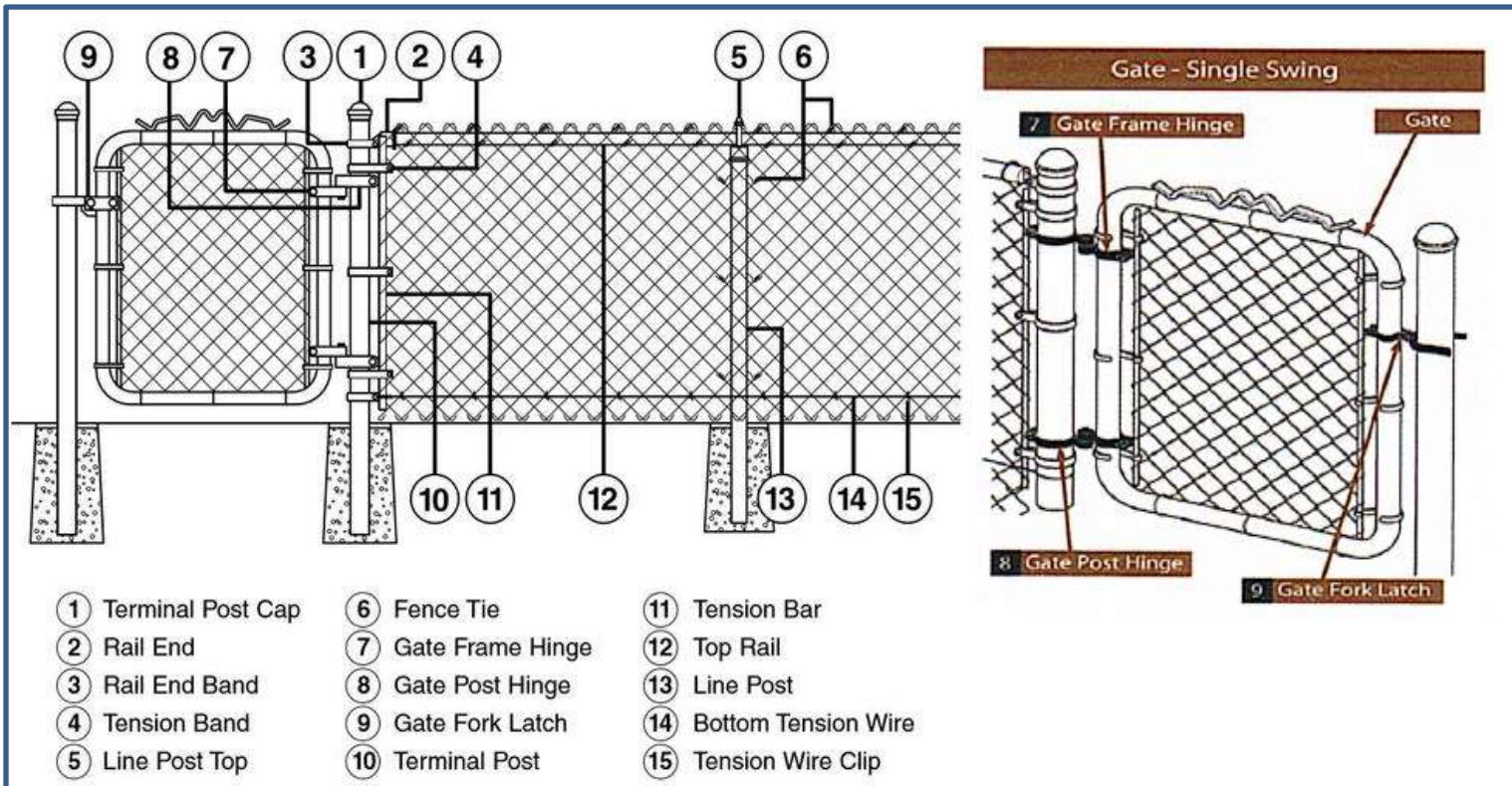


Design & Drawing – Temporary Fence Panel





Fence & Gate Installation





Technical Specification

Our Chain Link is manufactured on high speed fully automatic weavers and is available in two finishes.

A. Hot Dip Galvanized B. PVC Coated

Hot Dip Galvanized

Wire Diameter Ranges	:	2.00 ~ 4.00 MM
Zinc Coating	:	40 ~ 366 GMS / SQ.M
Tensile Strength of Wire	:	35 ~ 55 KGS
Mesh Size	:	40 ~ 75 MM
Height	:	900 ~ 4000 MM
Roll Size (Length)	:	10 ~ 25 M depending on the weight and height of FENCE

PVC Coated

Core Wire Diameter Ranges	:	2.00 ~ 4.00 MM
Minimum PVC coating of 0.50 MM thickness (1 MM in Total)	:	
Zinc Coating	:	40 ~ 366 GMS / SQ.M
Tensile Strength of Wire	:	35 ~ 55 KGS
Mesh Size	:	40 ~ 75 MM
Height	:	900 ~ 4000 MM
Roll Size (Length)	:	10 ~ 25 M depending on the weight and height of FENCE

Colors : Green (RAL 6005), Beige, Black, White
Other colors available on special request

The PVC compound used in coating our Chain Link is UV stabilized; End of Chain Link can be either knuckled or barbed.

Packing : Each Chain Link bundle is poly-wrapped and then loaded on 4 way pallets for ease of loading & unloading.

Fencing Fittings : Complete stock of fittings, either galvanized or PVC coated, for the Fence Assembly.

Barbed & Razor Wires : Galvanized or PVC coated, Concertina Barbed and Razor Wires as per customer's requirement.

Gates / Barriers

Single Leaf Walk Gate, Galvanized or PVC coated (Bolted or all Welded)
Double Leaf Swing Gate, Galvanized or PVC coated (Bolted or all Welded)
Sliding Gates, Galvanized or PVC coated (Bolted or Welded)
Manually or electrically operated with automization.

Services

Golden Fence Mechanical Services (**FENCING DIVISION**) offers a complete design service to customer's special requirements, comprehensive Quotations / Drawings for Fencing Projects.

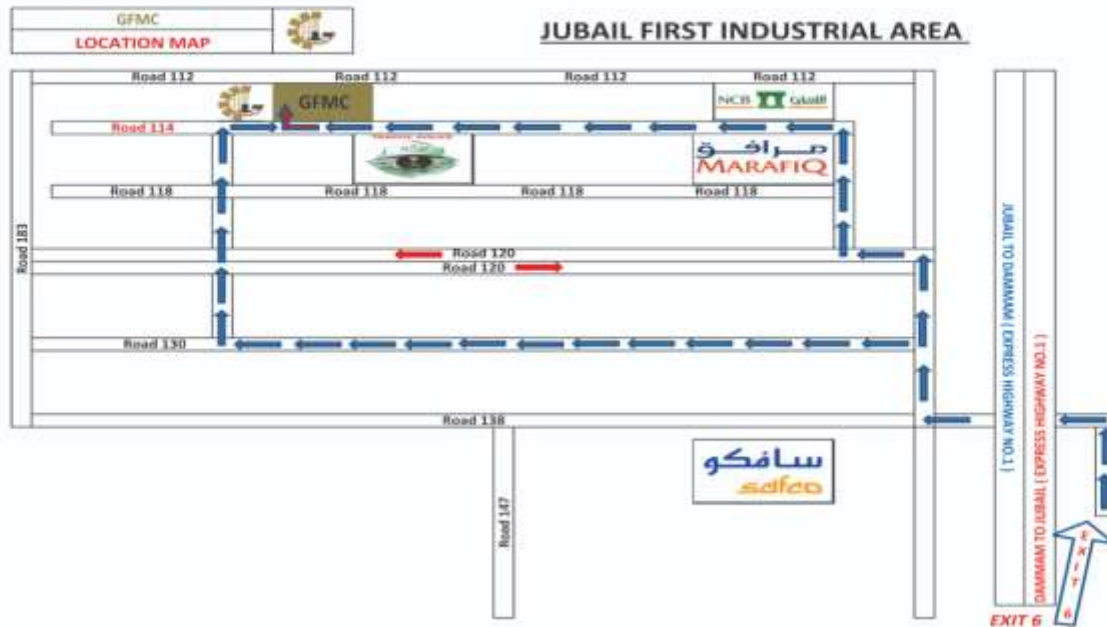
Applicable Standards

SSD	:	I ~ V
ARAMCO Types	:	I ~ V (ASTM)
HCIS Types	:	I ~ IV
Commercial	:	British Standard (BS)

GOLDEN FENCE MECHANICAL CO

COMPLETE SOLUTION FOR MECHANICAL & FENCE WORKS

GOLDEN FENCE GROUP OF COMPANIES



KISWA

GENERAL TRADING W.L.L

RIFFA / ALHAJIYAT BLOCK 939
ROAD 3953 BUILDING NO 2667
FLAT / SHOP 22 (BAHRAIN)
info@kiswa2.co
www.kiswa2.co



TIANJIN

GOLDEN FENCE IND.CO

#2 BUILDING MINGHAI CENTER
NO. 200 XICHANG ROAD TIANJIN
FREE TRADE ZONE (CHINA)
info@goldenfence.com
www.goldenfence.com



KISWA

MECHANICAL COMPLEX

MALIK HOSPITAL RASHEED
PURA SHALAMAR TOWN
LAHORE (PAKISTAN)
info@kiswa2.co
www.kiswa2.co

GOLDEN FENCE MECHANICAL CO
(HEAD OFFICE)

PO. BOX 36323, JUBAIL 31961 SUPPORT INDUSTRIAL AREA, ROAD 114
Tel: +966 13 340 8020 KINGDOM OF SAUDI ARABIA Fax: +966 13 340 8022
info@goldenfence.com www.goldenfence.com